

## Introduction

---

PARTEX develops and manufactures complete marking systems for wires, cables, pipes, electrical components etc.

Thanks to our customer driven approach and state-of-the-art production facilities, we can quickly adapt our products to customers' unique requirements.

Quality and an environmental approach are natural parts of PARTEX's business and accordingly we are certified to the ISO 9001 and ISO 14001 standards.



## Marking methods

---



### Single character

Consists of single character markers that can be combined with each other to give total marking flexibility.



### Multi character

Allows you to order markers already printed with the complete information in accordance with your specification.



### Do-It-Yourself

Allows you to produce your own markers on site.

## Material

---

### PVC

---

PVC stands for polyvinyl chloride, and it contains halogens. PVC has a natural flame decreasing property. It has a long life span and is sufficiently resistant to climatic factors. The PVC material is calcium and zinc stabilised. The softened PVC material contains a Di (2-ethylhexyl) phthalate softener. The material is strong and flexible. Temperatures below +60°C (140°F) are recommended working temperatures. PVC is recyclable and can be remelted several times. The above information applies to non-printed material only.

### ZEREX - Halogen free

---

Polyether-based thermoplastic, a compound of polyurethane (tpu). Zerex is a halogen free flame proof extrusion compound developed for applications requiring limited smoke and toxin generation. The temperature range is -30°C to +90°C (-22°F to +194°F). It has been approved for use in the subway systems of New York. The above information applies to non-printed material only. Product with a Z is halogen free, such as PAZ, PKZ, POZ, PTZ etc.

## Directives for all our products

---

### RoHS

---

The RoHS Directive stands for "the restriction of the use of certain hazardous substances in electrical and electronic equipment". This Directive bans the placing on the EU market of new electrical and electronic equipment containing more than agreed levels of lead, cadmium, mercury, hexavalent chromium, polybrominated biphenyl (PBB) and polybrominated diphenyl ether (PBDE) flame retardants.



### WEEE

---

The Waste Electrical and Electronic Equipment Directive (WEEE Directive) is the European Community directive 2002/96/EC on waste electrical and electronic equipment which, together with the RoHS Directive 2002/95/EC, became European Law in February 2003, setting collection, recycling and recovery targets for all types of electrical goods.

# Size Selection Guide

Ø		T	PA/PAZ/ PA+/PAZ+	PC/PTC	PCA	PO	PT/PT+	Ø	AWG	MM <sup>2</sup> (SQ. IN.)
MM	INCHES	PY						MM	INCHES	AWG & MM <sup>2</sup> SIZES FOR GUIDANCE ONLY
1.0	0.039							1.0	0.039	
1.2	0.047							1.2	0.047	
1.4	0.055							1.4	0.055	
1.6	0.063							1.6	0.063	
1.8	0.071							1.8	0.071	
2.0	0.079							2.0	0.079	
2.2	0.087							2.2	0.087	
2.4	0.094							2.4	0.094	
2.6	0.102							2.6	0.102	
2.8	0.110							2.8	0.110	
3.0	0.118							3.0	0.118	
3.2	0.126							3.2	0.126	
3.4	0.134							3.4	0.134	
3.6	0.142							3.6	0.142	
3.8	0.150							3.8	0.150	
4.0	0.157							4.0	0.157	
4.2	0.165							4.2	0.165	
4.4	0.173							4.4	0.173	
4.6	0.181							4.6	0.181	
4.8	0.189							4.8	0.189	
5.0	0.197							5.0	0.197	
5.2	0.204							5.2	0.204	
5.4	0.212							5.4	0.212	
5.6	0.220							5.6	0.220	
5.8	0.228							5.8	0.228	
6.0	0.236							6.0	0.236	
6.2	0.244							6.2	0.244	
6.4	0.252							6.4	0.252	
6.6	0.260							6.6	0.260	
6.8	0.268							6.8	0.268	
7.0	0.276							7.0	0.276	
7.2	0.284							7.2	0.284	
7.4	0.292							7.4	0.292	
7.6	0.300							7.6	0.300	
7.8	0.308							7.8	0.308	
8.0	0.315							8.0	0.315	
8.2	0.323							8.2	0.323	
8.4	0.331							8.4	0.331	
8.6	0.339							8.6	0.339	
8.8	0.347							8.8	0.347	
9.0	0.355							9.0	0.355	
9.2	0.363							9.2	0.363	
9.4	0.371							9.4	0.371	
9.6	0.379							9.6	0.379	
9.8	0.387							9.8	0.387	
10.0	0.394							10.0	0.394	
10.2	0.402							10.2	0.402	
10.4	0.410							10.4	0.410	
10.6	0.418							10.6	0.418	
10.8	0.426							10.8	0.426	
11.0	0.434							11.0	0.434	
11.2	0.442							11.2	0.442	
11.4	0.450							11.4	0.450	
11.6	0.458							11.6	0.458	
11.8	0.466							11.8	0.466	
12.0	0.473							12.0	0.473	
12.2	0.481							12.2	0.481	
12.4	0.489							12.4	0.489	
12.6	0.497							12.6	0.497	
12.8	0.505							12.8	0.505	
13.0	0.513							13.0	0.513	
13.2	0.521							13.2	0.521	
13.4	0.529							13.4	0.529	
13.6	0.537							13.6	0.537	
13.8	0.545							13.8	0.545	
14.0	0.552							14.0	0.552	
14.2	0.560							14.2	0.560	
14.4	0.568							14.4	0.568	
14.6	0.576							14.6	0.576	
14.8	0.584							14.8	0.584	
15.0	0.591							15.0	0.591	
15.2	0.599							15.2	0.599	
15.4	0.607							15.4	0.607	
15.6	0.615							15.6	0.615	
15.8	0.623							15.8	0.623	
16.0	0.630							16.0	0.630	
16.2	0.638							16.2	0.638	
16.4	0.646							16.4	0.646	
16.6	0.654							16.6	0.654	
16.8	0.661							16.8	0.661	
17.0	0.669							17.0	0.669	
17.2	0.677							17.2	0.677	
17.4	0.685							17.4	0.685	
17.6	0.693							17.6	0.693	
17.8	0.701							17.8	0.701	
18.0	0.709							18.0	0.709	
18.2	0.717							18.2	0.717	
18.4	0.724							18.4	0.724	
18.6	0.732							18.6	0.732	
18.8	0.740							18.8	0.740	
19.0	0.748							19.0	0.748	
19.2	0.756							19.2	0.756	
19.4	0.764							19.4	0.764	
19.6	0.772							19.6	0.772	
19.8	0.780							19.8	0.780	
20.0	0.787							20.0	0.787	
20.2	0.795							20.2	0.795	
20.4	0.803							20.4	0.803	
20.6	0.811							20.6	0.811	
20.8	0.819							20.8	0.819	
21.0	0.827							21.0	0.827	
21.2	0.835							21.2	0.835	
21.4	0.843							21.4	0.843	
21.6	0.850							21.6	0.850	
21.8	0.858							21.8	0.858	
22.0	0.866							22.0	0.866	
22.2	0.874							22.2	0.874	
22.4	0.882							22.4	0.882	
22.6	0.890							22.6	0.890	
22.8	0.898							22.8	0.898	
23.0	0.906							23.0	0.906	
23.2	0.913							23.2	0.913	
23.4	0.921							23.4	0.921	
23.6	0.929							23.6	0.929	
23.8	0.937							23.8	0.937	
24.0	0.945							24.0	0.945	
24.2	0.953							24.2	0.953	
24.4	0.961							24.4	0.961	
24.6	0.969							24.6	0.969	
24.8	0.976							24.8	0.976	
25.0	0.984							25.0	0.984	
25.2	0.992							25.2	0.992	
25.4	1.000							25.4	1.000	
25.6	1.008							25.6	1.008	
25.8	1.016							25.8	1.016	
26.0	1.024							26.0	1.024	
26.2	1.031							26.2	1.031	
26.4	1.039							26.4	1.039	
26.6	1.047							26.6	1.047	
26.8	1.055							26.8	1.055	
27.0	1.063							27.0	1.063	
27.2	1.071							27.2	1.071	
27.4	1.079							27.4	1.079	
27.6	1.087							27.6	1.087	
27.8	1.094							27.8	1.094	
28.0	1.102							28.0	1.102	

AWG and mm<sup>2</sup> for guidance only. The value can vary depending on the thickness of the insulation

## PA/PY closed slide on combination marker

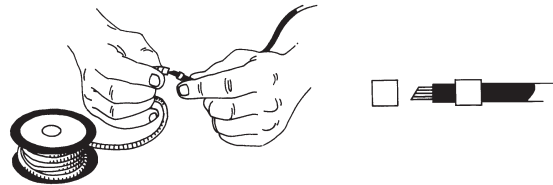
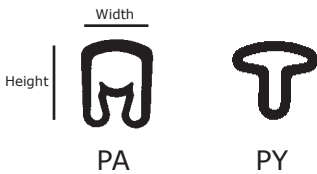


- Permanent grip and adjustable sleeve, spring-action bellows.
- Chevron cut for twist protection.
- PA is available in Halogen free material (ZEREX).
- Covers wire diameters 1.0 - 16.0 mm (AWG 24-0).
- A-Z, 0-9 in yellow or white with black print as standard. Special colours and prints on request.
- 0-9 in international colour code.



Type	Diameter mm	Area mm <sup>2</sup>	AWG	Length mm	No. of characters	Sleeve height (mm)	Sleeve width (mm)	Text height (mm)	STRIP PACK Cut/loose markers	SINGLE BAG Marker strips	REEL Semi cut markers	COMPACTADISC Semi cut markers
PY-01	1.0 - 2.0	~0.2 - 0.7	~24-19	3	1	3.3	3.5	2.6	5 x 200 pcs	-	1000 pcs	-
PA-02	1.3 - 3.0	~0.2 - 1.5	~22-16	3	1	3.6	3.5	2.6	5 x 200 pcs	250 pcs	1000 pcs	500 pcs
PA-1	2.5 - 5.0	~1.5 - 4.0	~16-11	3	1	5.5	4.2	2.6	5 x 200 pcs	250 pcs	1000 pcs	500 pcs
PA-2	4.0 - 10.0	~2.5 - 16.0	~13-5	4	1	9.5	6.6	4.0	5 x 100 pcs	250 pcs	-	250 pcs
PA-3	8.0 - 16.0	~16.0 - 70.0	~5-	6	1	16.5	11.0	4.0	5 x 20 pcs	-	-	-

AWG & mm<sup>2</sup> sizes for guidance only



## MD / MDH installation tool and holder for PA sleeves



- The MD / MDH forms a complete installation kit for PA 02 and PA 1 sleeves.
- An excellent aid for production, installation or maintenance work.
- The holder is easily loaded with the refill applicators.

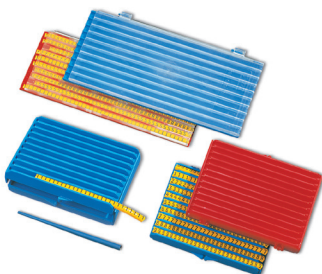


Type	Holder and applicator with standard kit	Empty holder	Empty applicators	Applicator with standard kit	Applicator with colour code	Applicator with 3-Phase marking kit
PA-02 (Red)	MDH2002S	MDH2002	MD-02	MD-02S	MD-02S09.09	-
PA-1 (Blue)	MDH2010S	MDH2010	MD-10	MD-10S	MD-10S09.09	MD-10FMS

## CAS/PAM cassettes and PAD/PAV installation tools for PA sleeves



- Flexible aid for service and maintenance marking.
- Saves time and money in marking work.
- Pocket size – easy to take along.
- CAS: Double-sided for right and left-mounting.



Cassettes ->	CAS-600	CAS-500	PAM-02	PAM-10
Designed for	PA-02	PA-1	PA-02	PA-1
Cassette colour	Red	Blue	Red	Blue
Max number of sleeves	600 pcs	500 pcs	440 pcs	440 pcs



Tools ->	PAD-3M	PAD-3T	PAD-4M	PAD-4T	PAD-5M	PAD-5T	PAV-02M	PAV-10M
Designed for	PA-02	PA-02	PA-1	PA-1	PA-1	PA-1	PA-02	PA-1
Material	Stainless steel	Teflon coated	Stainless steel	Teflon coated	Stainless steel	Teflon coated	Stainless steel	Stainless steel

## PC open clip-on combination marker



- For changes or already connected wires. Simply clip-on for secure, highly legible identification.
- A-Z, 0-9 in yellow or white with black print as standard. Special colours and prints on request.
- 0-9 in international colour code.



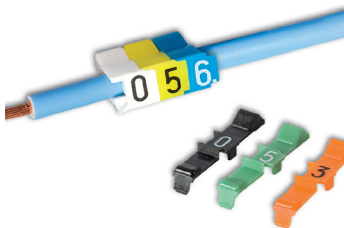
Type	Diameter mm	Area mm <sup>2</sup>	AWG	Length mm	No. of characters	Sleeve height (mm)	Sleeve width (mm)	Text height (mm)	STRIP PACK Cut/loose markers or strips
PC-10	2.4 - 3.0	~0.4 - 1.5	~22 - 16	3	1	3.6	3.7	2.6	5 x 200 pcs
PC-20	3.0 - 4.0	~1.5 - 3.0	~16 - 12	3	1	4.2	4.5	2.6	5 x 200 pcs
PC-30	4.0 - 5.0	~3.0 - 4.0	~12 - 11	3	1	9.5	5.7	2.6	5 x 200 pcs
PC-40	5.0 - 6.2	~4.0 - 5.0	~11 - 10	4	1	16.5	6.9	4.0	5 x 200 pcs

AWG & mm<sup>2</sup> sizes for guidance only

## PCA clip-on combination marker with locking function



- For changes or already connected wires.
- Halogen free polyamide 6.6.
- Wire diameter 2.2 mm to 6.0 mm (AWG 20-10), two different sizes.
- A-Z, 0-9 in yellow or white with black print.
- 0-9 in international colour code.



Type	Diameter mm	Area mm <sup>2</sup>	AWG	Length mm	No. of characters	Marker height (mm)	Marker width (mm)	Text height (mm)	BAG Marker strips
PCA10	2.2 - 3.6	~0.5 - 2.5	~20 - 14	4	1	9	5	3	10 strips x 32 pcs
PCA20	3.6 - 6.0	~2.5 - 6.0	~14 - 10	4	1	13	5	3	10 strips x 32 pcs

AWG & mm<sup>2</sup> sizes for guidance only

## PK/POK combination cable marker



### PK / POK

- Easy mounted onto PKH/POH carriers to fit any size of cable, tube or pipe.
- A-Z, 0-9 in yellow or white with black print as standard. Special colours and prints on request.
- 0-9 in international colour code.
- PK is available in Halogen free material (ZEREX).



### PKH / POH

- PKH/POH holders for cable markers, in cadmium and silicone free rigid PVC. PKH also available in Halogen free polyamide 6.6



Type	Diameter mm	Length mm	No. of characters	Sleeve height (mm)	Sleeve width (mm)	Text height (mm)	STRIP PACK Cut/loose markers	COMPACTDISC Semi cut markers
PK-2	-	4	1	-	11.3	4.0	5 x 100 pcs	500 pcs
POK10	5.0 - 6.5	4	1	4.3	11.3	-	-	500 pcs



PKH



POH

Marking Holder ->	PKH070	PKH070POL	PKH110POL	POH07	POH12	POH18	POH30
Maximum number of POK	10	10	20	7	12	18	30
Maximum number of PK 2/4	10	10	20	8	13	20	30
Maximum number of PKZ 2/6	-	7	13	5	9	13	20
Number per pack (Bag):	100 pcs	100 pcs	100 pcs	100 pcs	100 pcs	100 pcs	100 pcs

## SRP/SRC- Storage box



### SRP

- Robust steel plate storage box for PARTEX compactdiscs.
- Detachable upper tray for cable accessories.
- An excellent accessory which simplifies marking work.
- A perfect accessory for the MK9 ProMark.

### SRC

- A cardboard storage box for PARTEX compactdiscs.
- An excellent accessory which simplifies marking work.

## PKS stainless steel cable markers



- Stainless steel AISI 316 markers and cable ties for aggressive environments.
- Available both as single character markers and customized markers.
- Carriers of different length carrying up to 20 pre stamped single marker plates or up to 86 characters as customized stamped.
- Carriers are available with raised bridges or with holes.
- High quality cable ties in 150 mm, 200 mm and 360 mm lengths.

Type	Designation	Single characters Max number of characters	Customized pre stamped multi-characters			
			Max number of characters (1 line)	Text height (mm)	Max number of characters (2 lines)	Text height (mm)
PKS10040	47 mm carrier	6	8	4.5	2 x 11	3.2
PKS10060	65 mm carrier	9	13	4.5	2 x 18	3.2
PKS10080	87 mm carrier	13	19	4.5	2 x 27	3.2
PKS10100	109 mm carrier	17	25	4.5	2 x 35	3.2
PKS10120	128 mm carrier	20	30	4.5	2 x 43	3.2



Type	Details
PKS10006PP.#	Strips of characters. # = A-Z, 0-9 etc.
Basic marker set 1	0-9, special characters and holders. Contact PARTEX for more information
Basic marker set 2	A-Z etc. Contact PARTEX for more information
Stainless cable ties	Available in lengths of 150/200/360 mm. Width: 4.6 mm.
PKS10MT	Manual tie fixing tool
PKS10GS4MT	Automatic tie fixing tool

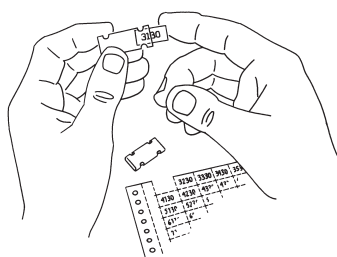
## PM transparent cable marker carrier



- Transparent holder for marker tags PF, PFC and PP-profile.



Type	Length mm	Width of punched hole mm	Suitable marking tag	BAG
PM-10	33	3.0	PF-10021, PFC04221, PP-046	100 pcs
PM-20	33/45/66	3.0	PF-20018, PF-07533, PFC09518, PFC07533, PP-090, MK9-PL090	50 / 100 pcs depending on sleeve size
PM-24	33/66	3.9	PF-20018, PFC09518, PP-090, MK9-PL090	50 / 100 pcs depending on sleeve size



Type	Punched	Width of punched hole mm	Suitable marking tag	Packaging Compactdisc / Carton
PM-20	No	-	PF-20018, PF-07533, PFC09518, PFC07533, PP-090, MK9-PL090	5 m / 20 m
PM-20Q	Yes	3.0	PF-20018, PF-07533, PFC09518, PFC07533, PP-090, MK9-PL090	5 m / 20 m
PM-24	No	-	PF-20018, PFC09518, PP-090, MK9-PL090	5 m / 20 m
PM-24Q	Yes	3.9	PF-20018, PFC09518, PP-090, MK9-PL090	5 m / 20 m

## PT/PT+/PTZ+/PTM wire marker carrier

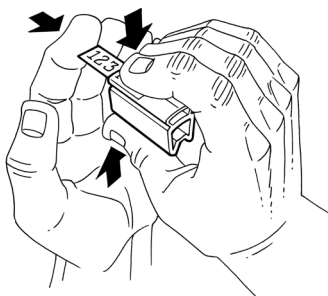


- PT/PT+ transparent sleeve with pocket for marker tag PF, PFC and PP.
- PTZ+ coloured sleeve with transparent pocket for marker tag PF, PFC and PP-profile.
- PTM transparent sleeve with wings for marker tag PFC and PP-profile.



Type	Pocket width (mm)	Diameter mm	Area mm <sup>2</sup>	AWG	Sleeve lengths		Packaging: Loose, cut sleeves in bag
					PT (mm)	PT+ (mm)	
PT/PT+02	4.2	1.3 - 3.0	~0.25 - 1.5	~22 - 16	15/21/30	12/15/18/21/30	200 pcs
PT/PT+10	4.2	2.5 - 5.0	~1.5 - 4.0	~16 - 11	15/21/30	12/15/18/21/30	200 pcs
PT/PT+20	4.2	4.0 - 10.0	~2.5 - 16.0	~13 - 4	15/21/30	12/15/18/21/30	100 pcs
PT/PT+30	4.2	8.0 - 16.0	~16.0 - 75.0	~6 - 2/0-3/0	15/21/30	12/15/18/21/30	50 pcs
PT+40	4.2	14.0 - 22.0	~50.0 - 150.0	~0 - 4/0-5/0	-	15/21/30	50 pcs

AWG & mm<sup>2</sup> sizes for guidance only



Type	Pocket width (mm)	Diameter mm	Area mm <sup>2</sup>	AWG	Sleeve lengths (mm)	Packaging: Loose, cut sleeves in bag
PTZ+10	4.2	2.5 - 5.0	~1.5 - 4.0	~16 - 11	12/15/18/21/30	200 pcs
PTZ+20	4.2	4.0 - 10.0	~2.5 - 16.0	~13 - 4	12/15/18/21/30	100 pcs
PTZ+30	4.2	8.0 - 16.0	~16.0 - 75.0	~6 - 2/0-3/0	12/15/18/21/30	50 pcs
PTZ+15	8.0	2.5 - 6.0	~1.5 - 6.0	~15 - 9	33	100 pcs
PTZ+25	8.0	4.0 - 10.0	~2.5 - 16.0	~13 - 6	33	100 pcs
PTZ+35	8.0	8.0 - 16.0	~16.0 - 70.0	~4 - 3	33	50 pcs

AWG & mm<sup>2</sup> sizes for guidance only



Type	Pocket width (mm)	Length (mm)	Packaging: Loose, cut sleeves in carton box
PTM-20	9.5	20	500 pcs

## PTC clip on wire marker carrier



- Sleeve with transparent pocket for marker tag PF, PFC and PP.
- For changes or already connected wires. Simply clip-on for secure, highly legible identification.



Type	Pocket width (mm)	Diameter mm	Area mm <sup>2</sup>	AWG	Sleeve lengths mm	Loose, cut sleeves in bag
PTC10	4.2	2.4 - 3.0	~0.4 - 1.5	~22 - 16	15/21/30	200 pcs
PTC20	4.2	3.0 - 4.0	~1.5 - 3.0	~16 - 12	15/21/30	200 pcs
PTC30	4.2	4.0 - 5.0	~3.0 - 4.0	~12 - 11	15/21/30	200 pcs
PTC40	4.2	5.0 - 6.2	~4.0 - 5.0	~11 - 10	15/21/30	100 pcs
PTC50	4.2	6.2 - 7.2	~5.0 - 6.0	~10 - 7	15/21/30	100 pcs

AWG & mm<sup>2</sup> sizes for guidance only



## PF marker tags for transparent carriers



- PF marker tags are made of semi-rigid, halogen free, polyester foil in A4 size, yellow and white.
- Fits PT, PT+, PTZ+, PTC, PM and PS transparent carriers.



Type	Width mm	Length mm	Number of labels per sheet	Number of sheets per pack	Information
PF-10015	4.6	15.0	792	10	Yellow / White
PF-10021	4.6	21.0	594	10	Yellow / White
PF-20018	9.5	17.5	352	10	Yellow / White
PF-07533	7.6 - 7.8	33.0	100	10	White
PFA20018	9.5	17.5	352	10	Yellow or White with adhesive

## PFC - X-CARD



- PFC marker tags in rigid, halogen free material. Available in white or yellow
- Printing in X-Card thermal transfer printer, fits PT, PT+, PTC, PTM, PM and PS transparent carriers.



Type	Information	Marker Tag / Lable Length (mm)	Marker Tag / Lable Height (mm)
PFC042	Marker tag for wire markers	12 / 15 / 18 / 21 / 30	4.2
PFC07533	Marker tag for cable or wire markers	33	7.5
PFC09518	Marker tag for cable or Component markers	17.5	9.5
PFC095	Cable marker	40 / 80	9.5
PFC07014	Label for component marking	14	7.0
PFC12726	Label for component marking	25.4	12.7
PFC15027	Sign for push buttons	25.6	15.6
PFC45080	Label for component marking	80	45.0

## PP / PPA Profile



- PP
- Flat hard marker tag profile for PT+, PTC, PTM and PM etc.
  - Developed for easy printing on site in the MK9 ProMark system



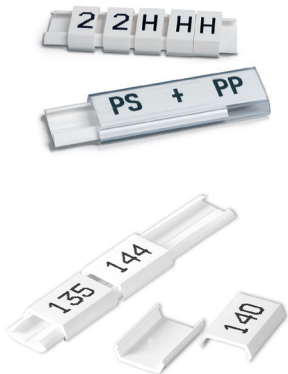
- PPA
- Self-adhesive flat PP-profile for component marking in cabinets etc.

Type	Information	Width mm	Compactadisc Length (m)
PP-profile	Marker tag profile	4.6 / 6.3 / 9.0 / 10.2 / 11.0	12 / 15 / 18
PPA-profile	Component marking with adhesive	9.0	10

## PS cabinet and component marking



- PS component marking is a universal system for marking of control panels and components.
- PS is available in pre-printed and as a D-I-Y system.
- 1 module = 17.5 mm



Description	Length	Colour:	Qty/pack
PS-20 *	Modules: 1/3 , 1/2 , 1 , 1 1/2 , 2 , 3	White or Transparent	20/50 pcs <sup>1</sup>
PS-20 profile. Neutral, no text	Length: 1000 mm	White or Transparent	20 pcs

\* = Desired character, ( A, B, C, 1, 2, 3 etc.)  
 \* = Strips of 12-number sequences, 1-12, 13-24, 25-36, 37-48, 49-60, 61-72, 73-84, 85-96, 97-100  
 1 = 20 Letters or 50 Numbers.

Type	Description	White	Black	Length mm	Width mm	Qty pack
PS-20BP	Base profile mounting rail	PS-20BPV	PS-20BPB	1000	11.6	10 pcs

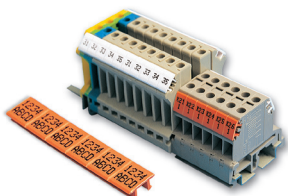
Type	Description	Diameter mm	Max. thickness of installation surface	Qty pack
PS-R6	Plastic rivet for fixing base profile rail	3.0	0.5 - 1.5	100 pcs
PS-R7	Plastic rivet for fixing base profile rail	3.0	1.5 - 2.5	100 pcs



## TX terminal block marking



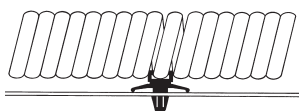
- TX terminal block markers fit most common manufacturers on the market such as Phoenix, Weidmüller etc.
- TX is available in pre-printed, customized and as a D-I-Y system.



Type	Marker lengths mm	Marker width mm	Marker height mm	Strips/bag
TX-96	5.0 / 5.2 / 6.0 / 6.2 / 7.3 / 8.0 / 10.0 / 10.2 / 12.0 / 14.1 / 15.1	9.6	4.0	10 strips
TX-61	5.1 / 6.1	6.1	2.8	10 strips

## SP - Spiral tubing

- Flexible spiral tube for fitting of cables, conductors, tubes, wire bundles etc.
- Excellent protection against mechanical wear.



Type	Available as Halogen free	Internal diameter, mm	Internal diameter, inch	Pack unit
SP-08100	No	8	.315	100 m
SP-10100	Yes	10	.394	60 m
SP-15100	Yes	15	.590	40 m
SP-20100	Yes	20	.787	40 m
SP-25100	Yes	25	.984	30 m
SP-30100	Yes	30	1.181	20 m
SP-40100	Yes	40	1.575	10 m
SP-50100	No	50	1.968	4 m

### SPH-1

Snap-into fastener of spiral tube in holed mounting plates. 50 pcs in one bag

## PO/POZ profile



- PO oval marking profile with a diameter range from 1.3 to 28.0 mm (AWG 23 – 7/0).
- Very fast, one hand mounting onto cable or wire.
- POZ: Halogen free material.
- Standard colours are yellow and white. Other colours on request.



Type	Diameter mm Min / Max	Area mm <sup>2</sup>	AWG	Compactdisc	Reel PO	PO Box	POZ
PO / POZ-01	1.3 / 1.8	~0.25	~23-20	6.0 m	250 m	-	250 m
PO / POZ-02	1.7 / 2.2	~0.5	~20-18	5.0 m	250 m	-	250 m
PO / POZ-03	2.0 / 2.5	~0.75	~18-17	4.5 m	250 m	-	250 m
PO / POZ-04	2.2 / 2.8	~1.0	~17-15	4.5 m	200 m	-	200 m
PO / POZ-05	2.7 / 3.5	~1.5	~15-13	4.0 m	200 m	-	200 m
PO / POZ-06	3.2 / 4.0	~2.5	~13-11	3.5 m	200 m	-	200 m
PO-06Q10	-	-	-	3.5 m	-	100 m	-
PO-068TW	6.8 / 7.0	-	-	4.5 m	50 m	-	-
PO / POZ-07	3.8 / 4.7	~4.0	~11-9	3.5 m	100 m	-	100 m
PO / POZ-08	4.6 / 5.5	~6.0	~9-7	-	100 m	-	100 m
PO / POZ-09	5.6 / 7.0	~10.0	~7-5	-	50 m	-	50 m
PO / POZ-10	6.5 / 8.0	~16.0	~5-3	-	50 m	-	50 m
PO / POZ-11	7.0 / 9.5	~18.0	~4-3	-	-	5x10 m	5x10 m
PO / POZ-12	7.5 / 10.0	~20.0	~4-2	-	-	5x10 m	5x10 m
PO / POZ-14	9.5 / 12.0	~25.0	~1/0	-	-	5x10 m	5x10 m
PO / POZ-16	11.5 / 14.0	~35.0	~1/0-2/0	-	-	2x5 m	2x5 m
PO / POZ-18	13.5 / 16.0	~50.0	~2/0-3/0	-	-	2x5 m	2x5 m
PO / POZ-20	15.5 / 18.0	~70.0	~3/0-4/0	-	-	2x5 m	2x5 m
PO / POZ-22	17.5 / 20.0	~95.0	~4/0	-	-	2x5 m	2x5 m
PO / POZ-24	19.5 / 22.0	~120.0	~4/0-5/0	-	-	2x5 m	2x5 m
PO / POZ-26	21.5 / 24.0	~150.0	~5/0-6/0	-	-	2x5 m	2x5 m
PO / POZ-28	24.0 / 28.0	~185.0	~6/0-7/0	-	-	2x5 m	2x5 m

AWG & mm<sup>2</sup> sizes for guidance only



## PHZ - Heat shrink tubing for printing

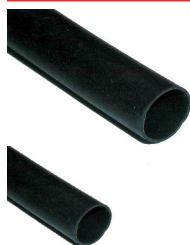


- Flexible halogen free heat shrink tubing for marking on site.
- Excellent fire safety characteristics.
- Flexible and easy mounted on cables and wires.
- 2:1 shrink ratio.
- Shrink temperature > 90°C.
- Working temperature -30°C to +105°C.
- Standard colour yellow and white, other colours on request.
- Efficient marking and assembly on site.
- Please contact PARTEX for more information regarding customized multi character marking.



Type	Diameter mm Before / Shrinked		Diameter inches Before / Shrinked		Wall thickness shrinked mm	Mini box	Reel
PHZ20016	1.6	0.8	1/16	1/32	0.43	-	200 m
PHZ20024	2.4	1.2	3/32	3/64	0.51	-	200 m
PHZ20032	3.2	1.6	1/8	1/16	0.51	15 m	200 m
PHZ20048	4.8	2.4	3/16	3/32	0.51	12 m	200 m
PHZ20064	6.4	3.2	1/4	1/8	0.65	12 m	150 m
PHZ20095	9.5	4.7	3/8	3/16	0.65	-	150 m
PHZ20127	12.7	6.4	1/2	1/4	0.65	-	100 m
PHZ20190	19.1	9.5	3/4	3/8	0.77	-	50 m
PHZ20254	25.4	12.7	1	1/2	0.89	-	50 m
PHZ20381	38.1	19.1	1.1/2	3/4	1.00	-	25 m
PHZ20510	50.8	25.4	2	1	1.10	-	25 m

## PHL - Heat shrink tubing for insulation



- Not for printing, insulation only.
- Shrink ratio: 2:1.
- Standard colour is black, other colours on request.
- Flame retardent crosslinked Polyolefin.
- UL Approved.
- Voltage 600V.
- Shrink temperature 100°C.
- Working temperature -55°C to +125°C.



Type	Diameter mm Before / Shrinked		Diameter inches Before / Shrinked		Wall thickness shrinked mm	Mini box	Reel
PHL20012	1.2	0.6	3/64	3/128	0.42	20 m	300 m
PHL20016	1.6	0.8	1/16	1/32	0.42	17 m	300 m
PHL20024	2.4	1.2	3/32	3/64	0.47	15 m	150 m
PHL20032	3.2	1.6	1/8	1/16	0.50	15 m	150 m
PHL20048	4.8	2.4	3/16	3/32	0.50	12 m	75 m
PHL20064	6.4	3.2	1/4	1/8	0.64	12 m	60 m
PHL20095	9.5	4.7	3/8	3/16	0.64	8 m	60 m
PHL20127	12.7	6.4	1/2	1/4	0.64	8 m	60 m
PHL20190	19.1	9.5	3/4	3/8	0.77	5 m	60 m
PHL20254	25.4	12.7	1	1/2	0.89	5 m	30 m
PHL20381	38.1	19.1	1.1/2	3/4	1.01	-	30 m
PHL20508	50.8	25.4	2	1	1.15	-	30 m
PHL20762	76.2	38.1	3	1.1/2	1.40	-	15 m
PHL21016	101.6	50.8	4	2	1.40	-	15 m

## MK500 – Plotter



- Provides complete multi character marking for cables, wires, terminal blocks and components.
- Prints on PA+, PC, PK, POH, PFC, TX, and PS products.

THE BASIC MK500 KIT INCLUDES:  
 Plotter MK500  
 VarioSign  
 Printer Cable

Print: Plotter pens with etching ink  
 Speed: 5 to 40 mm/s  
 PC connection: USB or RS232  
 Profile types: Pre-cut profiles

## MK3 – X-Card thermal transfer printer



- Complete marking system for cable, wires and components.
- Thermal transfer printing onto PARTEX PFC cards.
- Windows based printer controlled by PARTEX software WinSign.

THE BASIC MK3 KIT INCLUDES:  
 Printer Zebra P330i  
 Ribbon  
 Cleaning kit  
 Winsign  
 Manuals  
 Printer cable

Print: Ribbon, thermal transfer printing  
 Speed: (Monochrome): 5 seconds / card  
 (Colour): 30 seconds / card  
 PC connection: USB  
 Profile types: Cards

## MK9 – ProMark thermal transfer printer

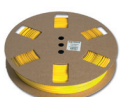
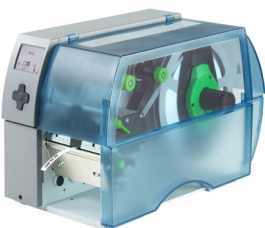


- Compact, portable, ID printer for cable, wire and component marking on site.
- Feeds, prints and cuts PARTEX PO/POZ (PO/POZ-02 to PO/POZ-07), PP, PPA and PHZ (PHZ032 to PHZ064) and self adhesive labels (PL)
- Import files to the printer by using WinSign and a Compact Flash card.
- White and black ribbon is available

THE BASIC MK9 KIT INCLUDES:  
 MK9 Printer  
 Black ribbon  
 Ribbon holder  
 Power unit  
 Manuals and a Quick start  
 PO-05 Profile, white and yellow  
 PO-068TW profile  
 Cable ties  
 POH-07

Print: Ribbon, thermal transfer printing  
 Speed: 10 or 25 mm/s  
 PC connection: Compact flash card  
 Profile types: Continuous profiles  
 Tape cassettes

## MK10 - Thermal transfer printer



- Compact heavy duty printer for high demand production for wire, cable and component marking.
- Feeds, prints and cuts bulk PARTEX profiles and self adhesive profiles.
- MK10 is a very cost effective identification system for use in panel building and electrical installations.
- USB connection, controlled by PARTEX software WinSign.

THE BASIC MK10 KIT INCLUDES:  
 MK10 Printer  
 Manuals  
 Printer cable  
 WinSign  
 Ribbon  
 Cutting unit

Print: Ribbon, thermal transfer printing  
 Speed: 125 mm/s  
 PC connection: USB  
 Profile types: Continuous profiles,  
 Labels

- WinSign is a system solution for handling marking data from CAD systems etc. Can import various, commonly used, file types.
- Print to laser printers, MK3, SP-1W, SP2000, MK1 and MK9.



**System demands**

Processor type:	Min. Pentium II
RAM memory:	Min. 64 MB
Hard drive:	Min. 10 MB free space
CD-reader	Yes
Environments:	Windows ME, 2000 and XP

**PLS - PARTEX Label Systems**

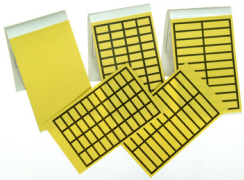
**PLD - Dispenser for numbers and letters**

- Dispenser for combination markings numbers and letters.
- Hand held and pocket size for convenient markings on-site.
- Contains 10 single-characters adhesive tape rolls.
- Can be filled with any combination.



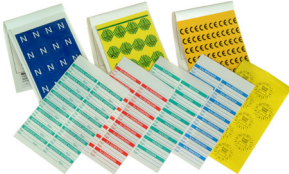
**PLB - Booklets of pre-printed markers and write-ons**

- The all around solution for anybody working with electrical circuits requiring careful identification.
- Handy booklets with pre-printed numbers, letters, symbols, standard texts, labels for hand writing and write-ons.
- Easy to tear off when used on site and booklets fits well in pocket.
- Can easily be marked with ink pen, felt pen or ball-point pen.



**PLC - Cards with pre-printed markers**

- Adhesive label strips on cards for wire and cable marking.
- Numbers, letters, series of numbers and symbols are included.
- Acrylic cloth, PVC and halogen free.
- Easy dismantled from cards, good overview and visibility.



**PLL - Laser printable labels and write-ons**

- Special topcoated polyester surface for printing in laser printer.
- Ideal choice as general all-purpose label marking, component marking etc.



**PLT - Thermal transfer printable labels and write-ons.**

- Special topcoated polyester surface for thermal transfer print.
- Ideal choice as general all-purpose label marking, component marking etc.

**PAG - Standard multi character**

- Sequence, paginated or same marking characters on reels
- Contact PARTEX for more information.



**Examples**

2 paginated 20 number sequences: 060-079

(060, 060, 061, 061.....079, 079)

Same number: 27

(27, 27, 27, 27 etc.)

Common paginated sequences: L1 , L2 , L3 , PE , TRIP etc.

Type	Diameter mm	Area mm <sup>2</sup>	AWG	2 characters, sleeve length mm	3 characters, sleeve length mm	4 characters, sleeve length mm
PA-02	1.3-3.0	~0.2-1.5	~22-16	6	9	12
PA-1	2.5-5.0	~1.5-4.0	~16-11	6	9	12
PA-2	4.0-10.0	~2.5-16.0	~13-5	6	9	12
PC-10	2.4-3.0	~0.4-1.5	~22-16	6	9	12
PC-20	3.0-4.0	~1.5-3.0	~16-12	6	9	12

AWG & mm<sup>2</sup> sizes for guidance only

# Customized multi character wire and cable markers



- Customized multi-character marking with all information on one sleeve. Reduces the marking time and cost.
- Packaging and sorting for different needs to speed up the marking work.
- PA+ patented sleeve with unique grooves for easier mounting and flat top for excellent readability.
- PA+, PAZ, PC, PCZ, PK, PKZ, PO, POZ and PH products can be printed.
- Please contact PARTEX for more information regarding customized multi character marking, ordering etc.



CLOSED WIRE MARKER					
PRODUCT GROUP		DIAMETER mm	AREA mm <sup>2</sup>	AWG	SLEEVE LENGTH MIN-MAX (mm)
PVC	ZEREX				
PY-01	-	1.0-2.0	~0.2-0.7	~24-19	6-39
PA+02	PAZ02	1.3-3.0	~0.2-1.5	~22-16	6-48
PA+05	PAZ05	2.0-4.0	~0.5-2.5	~18-14	6-48
PA+1	PAZ1	2.5-5.0	~0.75-4.0	~16-11	6-48
PA+11	PAZ11	2.8-5.5	~1.0-6.0	~16-10	6-48
PA+2	PAZ2	4.0-10.0	~2.5-16.0	~13-5	6-48
PA-3 *	PAZ3 *	8.0-16.0	~16.0-70.0	~5-	15 / 24 / 33
PO-01	POZ01	1.3-1.8	~0.25	~23-20	
PO-02	POZ02	1.7-2.2	~0.5	~20-18	
PO-03	POZ03	2.0-2.5	~0.75	~18-17	
PO-04	POZ04	2.2-2.8	~1.0	~17-15	
PO-05	POZ05	2.7-3.5	~1.5	~15-13	
PO-06	POZ06	3.2-4.0	~2.5	~13-11	
PO-07	POZ07	3.8-4.7	~4.0	~11-9	
PO-08	POZ08	4.6-5.5	~6.0	~9-7	
PO-09	POZ09	5.6-7.0	~10.0	~7-5	
PO-10	POZ10	6.5-8.0	~16.0	~5-3	
PO-11	POZ11	7.0-9.5	~18.0	~4-3	
PO-12	POZ12	7.5-10.0	~20.0	~4-2	
PO-14	POZ14	9.5-12.0	~25.0	~1/0	
PO-16	POZ16	11.5-14.0	~35.0	~1/0-2/0	
PO-18	POZ18	13.5-16.0	~50.0	~2/0-3/0	
PO-20	POZ20	15.5-18.0	~70.0	~3/0-4/0	
PO-22	POZ22	17.5-20.0	~95.0	~4/0	
PO-24	POZ24	19.5-22.0	~120.0	~4/0-5/0	
PO-26	POZ26	21.5-24.0	~150.0	~5/0-6/0	
PO-28	POZ28	24.0-28.0	~185.0	~6/0-7/0	

LENGTHS & CHARACTERS	
MAX NO. OF CHARACTERS	SLEEVE LENGTH mm
2	6
3	9
4	12
5	15
7	18
9	21
11	24
13	27
15	30
17	33
19	36
21	39
24	42
27	45
30	48
FOR PA3	
MAX NO. OF CHARACTERS	SLEEVE LENGTH mm
7	15
12	24
21	33
FOR PUNCHED PROFILE	
MAX NO. OF CHARACTERS	SLEEVE LENGTH mm
7	18
10	25
21	40

OPEN WIRE MARKER					
PRODUCT GROUP		DIAMETER mm	AREA mm <sup>2</sup>	AWG	SLEEVE LENGTH MIN-MAX (mm)
PVC	ZEREX				
PC-10	PCZ10	2.4-3.0	~1.0	~22-16	6-36
PC-20	PCZ20	3.0-4.0	~2.5	~16-12	6-36
PC-30	PCZ30	4.0-5.0	~4.0	~12-11	6-36
PC-40	PCZ40	5.0-6.2	~6.0	~11-10	6-36
PC-50	PCZ50	6.0-7.2	~10.0	~7-5	6-36

CABLE MARKER					
PRODUCT GROUP		CAN BE ORDERED WITH			SLEEVE LENGTH MIN-MAX (mm)
PVC	ZEREX	2 LINE TEXT	LARGE TEXT **	PUNCHED HOLES	
PK	PKZ	YES	YES	NO	6-48
PK-20Q25	PKZ20Q25	YES	YES	IN CENTER	25
PK-20Q40	PKZ20Q40	YES	YES	BOTH ENDS	40
PO-06Q18	POZ06Q18	NO	NO	IN CENTER	18
PO-06Q40	POZ06Q40	NO	NO	ONE END	40

\* CAN BE ORDERED WITH 2 LINE TEXT (PA3)  
 \*\* LESS CHARACTERS THAN STANDARD (PK etc.)

AWG & mm<sup>2</sup> sizes for guidance only